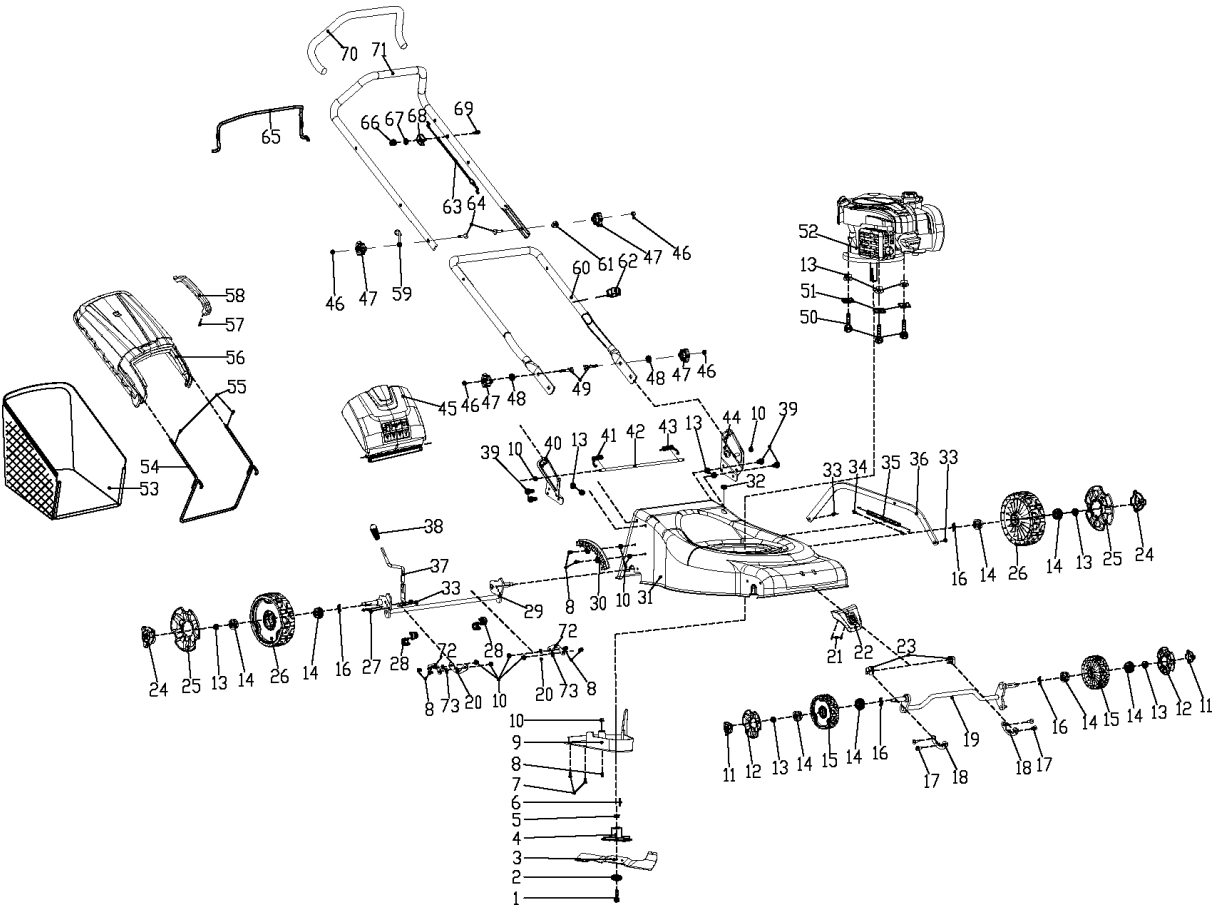




SPARE PARTS LIST

LAWN MOWERS: CONSUMER
WALK-BEHINDS

LC140, 967320001, 2014-01



Ref	Part No	Description	Remark	QTY KIT
1	587 91 38-01	LOCKING BOLT		1
2	587 91 07-01	WASHER		1
3	587 38 63-10	MOWER BLADE		1
4	587 91 12-01	BLADE SUPPORT		1
5	587 91 54-01	BUSH		1
6	587 91 53-01	FLAT PIN		1
7	587 91 22-01	SCREW		2
8	587 91 26-01	SCREW		7
9	587 90 98-01	COVER		1
10	587 91 34-01	LOCK NUT		9
11	587 58 50-01	WHEEL COVER		2
12	587 58 52-01	WHEEL COVER		2
13	587 91 35-01	LOCKING BOLT		11
14	587 91 29-01	BEARING		8
15	587 58 54-01	WHEEL		2
16	587 91 46-01	WASHER		4
17	587 91 25-01	SCREW		4
18	587 91 10-01	FIXING PLATE		2
19	587 91 15-01	AXLE		1
20	587 91 09-01	FIXING PLATE		2
21	587 91 24-01	SCREW		2
22	587 58 49-01	FRONT COVER		1
23	587 90 97-01	LOCKING RING		2
24	587 58 51-01	WHEEL COVER		2
25	587 58 53-01	WHEEL COVER		2
26	587 91 80-01	WHEEL		2
27	587 91 27-01	WASHER		2
28	587 91 79-01	COVER		4
29	587 91 81-01	AXLE		1
30	587 90 99-01	SEGMENT		1
31	587 90 88-01	PLATE		1
32	587 99 23-01	PLUG		1
33	587 91 31-01	LOCKING BOLT		4
34	587 91 58-01	TUBING		2
35	587 91 49-01	SPRING		1
36	587 91 17-01	CONNECTING ROD		1
37	587 91 83-01	HANDLE ASSY		1
38	587 58 57-01	KNOB		1
39	587 91 39-01	BOLT		4
40	587 90 89-01	BRACKET		1
41	587 91 51-01	SPRING		1
42	587 91 14-01	ROD		1
43	587 91 50-01	BRACKET		1
44	587 90 90-01	BRACKET		1
45	587 58 59-01	FLAP		1
46	587 91 33-01	HEXAGON NUT		4
47	587 58 58-01	KNOB		4
48	587 91 43-01	WASHER		2
49	587 91 42-01	BOLT		2
50	587 91 37-01	BOLT		3
51	587 91 11-01	GASKET		3
52	587 91 61-01	ENGINE		1
53	587 58 63-01	GRASSBAG		1
54	587 91 18-01	BRACKET		1
55	587 91 21-01	SCREW		2
56	587 58 60-01	COVER		1
57	587 91 23-01	SCREW		1
58	587 58 61-01	HANDLE		1
59	587 91 06-01	ROPE		1
60	587 90 91-01	HANDLE		1
61	587 90 95-01	WASHER		1
62	587 91 04-01	CLAMP		1
63	587 91 59-01	DRIVE CABLE		1
64	587 91 36-01	BOLT		2

Ref	Part No	Description	Remark	QTY KIT
65	587 90 92-01	HANDLEBAR		1
66	587 91 32-01	NUT		1
67	587 91 44-01	RING		1
68	587 91 03-01	HOLDER		1
69	587 91 40-01	BOLT		1
70	587 91 05-01	HANDLE GRIP		1
71	587 90 94-01	HANDLE		1
72	587 99 24-01	FIXING PLATE		2
73	587 99 25-01	O-RING		4